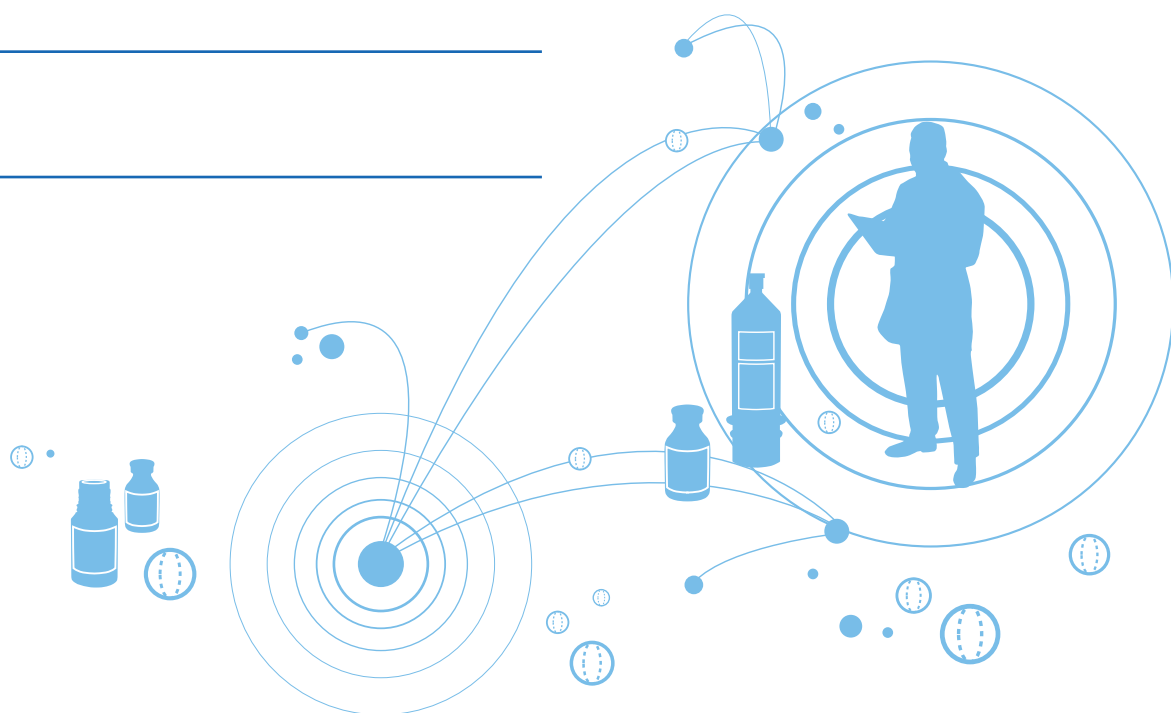


GE Healthcare

Contrast Media Warmer Temperature Log

Institution _____

Year _____



GE Healthcare Contrast Media Warmer Temperature Log

January	Time	Temperature	Signature	Comments
1				
2				
3				
4				
5				
6				
7				
8				
9				
10				
11				
12				
13				
14				
15				
16				
17				
18				
19				
20				
21				
22				
23				
24				
25				
26				
27				
28				
29				
30				
31				

GE Healthcare Contrast Media Warmer Temperature Log

February	Time	Temperature	Signature	Comments
1				
2				
3				
4				
5				
6				
7				
8				
9				
10				
11				
12				
13				
14				
15				
16				
17				
18				
19				
20				
21				
22				
23				
24				
25				
26				
27				
28				
29				

GE Healthcare Contrast Media Warmer Temperature Log

March	Time	Temperature	Signature	Comments
1				
2				
3				
4				
5				
6				
7				
8				
9				
10				
11				
12				
13				
14				
15				
16				
17				
18				
19				
20				
21				
22				
23				
24				
25				
26				
27				
28				
29				
30				
31				

GE Healthcare Contrast Media Warmer Temperature Log

April	Time	Temperature	Signature	Comments
1				
2				
3				
4				
5				
6				
7				
8				
9				
10				
11				
12				
13				
14				
15				
16				
17				
18				
19				
20				
21				
22				
23				
24				
25				
26				
27				
28				
29				
30				

GE Healthcare Contrast Media Warmer Temperature Log

May	Time	Temperature	Signature	Comments
1				
2				
3				
4				
5				
6				
7				
8				
9				
10				
11				
12				
13				
14				
15				
16				
17				
18				
19				
20				
21				
22				
23				
24				
25				
26				
27				
28				
29				
30				
31				

GE Healthcare Contrast Media Warmer Temperature Log

June	Time	Temperature	Signature	Comments
1				
2				
3				
4				
5				
6				
7				
8				
9				
10				
11				
12				
13				
14				
15				
16				
17				
18				
19				
20				
21				
22				
23				
24				
25				
26				
27				
28				
29				
30				

GE Healthcare Contrast Media Warmer Temperature Log

July	Time	Temperature	Signature	Comments
1				
2				
3				
4				
5				
6				
7				
8				
9				
10				
11				
12				
13				
14				
15				
16				
17				
18				
19				
20				
21				
22				
23				
24				
25				
26				
27				
28				
29				
30				
31				

GE Healthcare Contrast Media Warmer Temperature Log

August	Time	Temperature	Signature	Comments
1				
2				
3				
4				
5				
6				
7				
8				
9				
10				
11				
12				
13				
14				
15				
16				
17				
18				
19				
20				
21				
22				
23				
24				
25				
26				
27				
28				
29				
30				
31				

GE Healthcare Contrast Media Warmer Temperature Log

September	Time	Temperature	Signature	Comments
1				
2				
3				
4				
5				
6				
7				
8				
9				
10				
11				
12				
13				
14				
15				
16				
17				
18				
19				
20				
21				
22				
23				
24				
25				
26				
27				
28				
29				
30				

GE Healthcare Contrast Media Warmer Temperature Log

October	Time	Temperature	Signature	Comments
1				
2				
3				
4				
5				
6				
7				
8				
9				
10				
11				
12				
13				
14				
15				
16				
17				
18				
19				
20				
21				
22				
23				
24				
25				
26				
27				
28				
29				
30				
31				

GE Healthcare Contrast Media Warmer Temperature Log

November	Time	Temperature	Signature	Comments
1				
2				
3				
4				
5				
6				
7				
8				
9				
10				
11				
12				
13				
14				
15				
16				
17				
18				
19				
20				
21				
22				
23				
24				
25				
26				
27				
28				
29				
30				

GE Healthcare Contrast Media Warmer Temperature Log

December	Time	Temperature	Signature	Comments
1				
2				
3				
4				
5				
6				
7				
8				
9				
10				
11				
12				
13				
14				
15				
16				
17				
18				
19				
20				
21				
22				
23				
24				
25				
26				
27				
28				
29				
30				
31				

If you have any questions or require technical assistance regarding GE Healthcare's Contrast Media Warmer, please contact Quincy Lab technical support at 1 800 482 4328.

For GE Healthcare product information please call 1 800 654 0118, option #2, then option #3 between the hours of 8:00 am and 5:00 pm ET.

For a free download of this log book, please visit <http://md.gehealthcare.com> or contact your GE Healthcare Sales Representative.

